



JSJ-6

Planer

~230V 50Hz

PARTS LIST

JPW (Tool) AG

Ackerstrasse 45

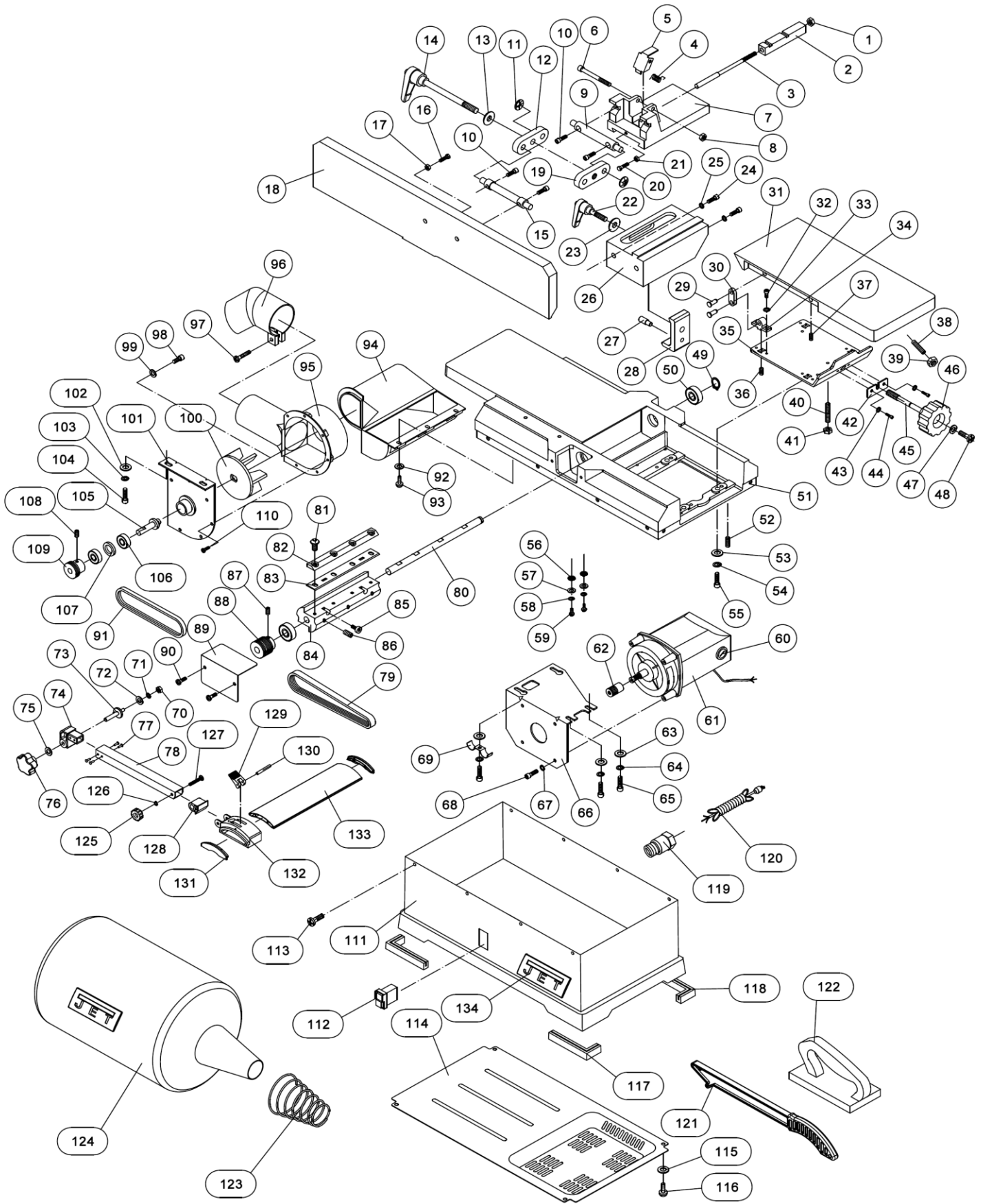
CH-8610 Uster

Switzerland

www.jettools.com

P-10000278M 2019-11

Parts Breakdown for JSJ-6 Planer



Parts List for JSJ-6 Planer

Index No.	Part No.	Description	Size	Qty
1	JSJ6-001	Hex Nut	M6	1
2	JSJ6-002	Block		1
3	JSJ6-003	Shaft		1
4	JSJ6-004	Spring		1
5	JSJ6-005	Limit Plate		1
6	JSJ6-006	Socket Head Screw	M6x50	1
7	JSJ6-007	Fence Bracket		1
8	JSJ6-008	Hex Nut	M6	1
9	JSJ6-009	Bracket Shaft		1
10	JSJ6-010	Socket Head Screw	M6x20	4
11	JSJ6-011	Push Nut		2
12	JSJ6-012	Right Link		1
13	JSJ6-013	Spacer		1
14	JSJ6-014	Fence Tilting Handle		1
15	JSJ6-015	Plate Shaft		1
16	JSJ6-016	Hex Head Bolt	M5x25	1
17	JSJ6-017	Hex Nut	M5	1
18	JSJ6-018	Fence		1
19	JSJ6-019	Left Link		1
20	JSJ6-020	Hex Head Bolt	M5x25	1
21	JSJ6-021	Hex Nut	M5	1
22	JSJ6-022	Fence Sliding Handle		1
23	JSJ6-023	Spacer		1
24	JSJ6-024	Socket Head Screw	M6x16	2
25	JSJ6-025	Lock Washer	M8	2
26	JSJ6-026	Fence Support		1
27	JSJ6-027	Pin		1
28	JSJ6-028	Locking Plate		1
29	JSJ6-029	Pin		8
30	JSJ6-030	Bracket		4
31	JSJ6-031	Infeed Table		1
32	JSJ6-032	Socket Head Screw	M5x10	8
33	JSJ6-033	Lock Washer	Ø5	8
34	JSJ6-034	Connection Bracket		4
35	JSJ6-035	Table Support Plate		1
36	JSJ6-036	Set Screw	M5x6	4
37	JSJ6-037	Set Screw	M6x8	4
38	JSJ6-038	Set Screw	M6x25	1
39	JSJ6-039	Hex Nut	M6	1
40	JSJ6-040	Set Screw	M6×35	1
41	JSJ6-041	Hex Nut	M6	1
42	JSJ6-042	Support Plate		1
43	JSJ6-043	Lock Washer	Ø5	2

Parts List for JSJ-6 Planer

Index No.	Part No.	Description	Size	Qty
44	JSJ6-044	Socket Head Screw	M5x10	2
45	JSJ6-045	Elevation Screw		1
46	JSJ6-046	Handwheel		1
47	JSJ6-047	Flat Washer	Ø5	1
48	JSJ6-048	Pan Head Screw	M5x10	1
49	JSJ6-049	Retaining Ring	Ø12	1
50	JSJ6-050	Ball Bearing	6201-2Z	2
51	JSJ6-051	Body With Outfeed Table		1
52	JSJ6-052	Set Screw	M6x16	4
53	JSJ6-053	Flat Washer	Ø6	4
54	JSJ6-054	Lock Washer	Ø6	4
55	JSJ6-055	Socket Head Screw	M6x30	4
56	JSJ6-056	Seriated Washer	Ø5	2
57	JSJ6-057	Flat Washer	Ø5	2
58	JSJ6-058	Lock Washer	Ø5	2
59	JSJ6-059	Pan Head Screw	M5x10	2
60	JSJ6-060	Brush		2
61	JSJ6-061	Motor		1
62	JSJ6-062	Motor Pulley		1
63	JSJ6-063	Flat Washer	Ø6	4
64	JSJ6-064	Lock Washer	Ø6	4
65	JSJ6-065	Socket Head Screw	M6x12	4
66	JSJ6-066	Motor Support		1
67	JSJ6-067	Lock Washer	Ø5	4
68	JSJ6-068	Socket Head Screw	M5x10	4
69	JSJ6-069	Cord Clamp		1
70	JSJ6-070	Hex Nut	M6	1
71	JSJ6-071	Lock Washer	Ø6	1
72	JSJ6-072	Flat Washer	Ø6	1
73	JSJ6-073	Shaft		1
74	JSJ6-074	Arm Support		1
75	JSJ6-075	Flat Washer	Ø8	1
76	JSJ6-076	Arm Locking Knob		1
77	JSJ6-077	Pan Head Screw	M4x8	4
78	JSJ6-078	Arm		1
79	JSJ6-079	Drive Belt	5PJ170	1
80	JSJ6-080	Shaft		1
81	JSJ6-081	Screw		8
82	JSJ6-082	Blade Clamp		2
83	JSJ6-083	Blade		2
84	JSJ6-084	Shaft		1
85	JSJ6-085	Jack Screw		4

Parts List for JSJ-6 Planer

Index No.	Part No.	Description	Size	Qty
86	JSJ6-086	Set screw	M6x10	3
87	JSJ6-087	Set screw	M6x10	1
88	JSJ6-088	Drive pulley		1
89	JSJ6-089	Cover		1
90	JSJ6-090	Socket head screw	M5x8	2
91	JSJ6-091	Fan belt	2PJ140	1
92	JSJ6-092	Flat washer	5	3
93	JSJ6-093	Pan head screw	M5x10	3
94	JSJ6-094	Chip collector		1
95	JSJ6-095	Chip exhaust		1
96	JSJ6-096	Dust chute		1
97	JSJ6-097	Pan head screw	M6x25	1
98	JSJ6-098	Socket head screw	M5x12	1
99	JSJ6-099	Flat washer	Ø15xØ5x2	1
100	JSJ6-100	Fan		1
101	JSJ6-101	Mounting plate		1
102	JSJ6-102	Flat washer	6	2
103	JSJ6-103	Lock washer	6	2
104	JSJ6-104	Socket head screw	M6x12	2
105	JSJ6-105	Fan shaft		1
106	JSJ6-106	Ball bearing	6000-2Z	2
107	JSJ6-107	Spacer		1
108	JSJ6-108	Set screw	M6x10	1
109	JSJ6-109	Fan pulley		1
110	JSJ6-110	Thread forming screw	ST4.2x9.5	6
111	JSJ6-111	Base		1
112	JSJ6-112	Switch		1
113	JSJ6-113	Flat head screw	M5x10	13
114	JSJ6-114	Cover		1
115	JSJ6-115	Flat washer	4	6
116	JSJ6-116	Pan head screw	M4x10	6
117	JSJ6-117	Foot A		2
118	JSJ6-118	Foot B		2
119	JSJ6-119	Strain relief		1
120	JSJ6-120	Power cord		1
121	JSJ6-121	Push stick		1
122	JSJ6-122	Push block		1
123	JSJ6-123	Spring		1
124	JSJ6-124	Filter bag		1
125	JSJ6-125	Knob		1
126	JSJ6-126	Retaining ring		1
127	JSJ6-127	Carriage bolt		1
128	JSJ6-128	Arm cover		1

Parts List for JSJ-6 Planer

129	JSJ6-129	Lock knob		1
130	JSJ6-130	Pin		1
131	JSJ6-131	End cover		2
132	JSJ6-132	Bridge cover support		1
133	JSJ6-133	Bridge cover		1
134	JET-92	JET LOGO	92x38mm	1
135	JSJ6-135	JET ID Label(Not shown)		1
136	JSJ6-136	JET Motor Label(Not shown)		1
137	JSJ6-137	JET Warning Label(Not shown)		1

Wiring Diagram for JSJ-6 Planer

	colour of strands	Litzenfarben	couleur des cordons
BK	black	schwarz	noir
WH	white	weiß	blanc
BU	blue	blau	bleu
YE	yellow	gelb	jaune
RD	red	rot	rouge
BN	brown	braun	brun
GY	grey	grau	gris
GNYE	green-yellow	grün-gelb	vert-jaune
OG	orange	orange	orange
VT	violet	violett	violet

	meaning of symbol	Bedeutung der Zeichen	interprétation
M	motor	Motor	moteur
S	switch	Schalter	interrupteur
C	condenser	Kondensator	condensateur
E	electronic unit	Elektronik Einheit	unité électronique
F	fuse	Sicherung	fusible
RS	reversing switch	Drehrichtungsschalter	commu. droite/gauche
CS	centrifugal switch	Fliehkraftschalter	déclencheur centrifuge
OL	overload cut-off	Überlastschuttschalter	déclencheur surcharge
L	machine lamp	Maschinenleuchte	lampe
LS	limit switch	Positionsendschalter	micro

